

# CELTICA

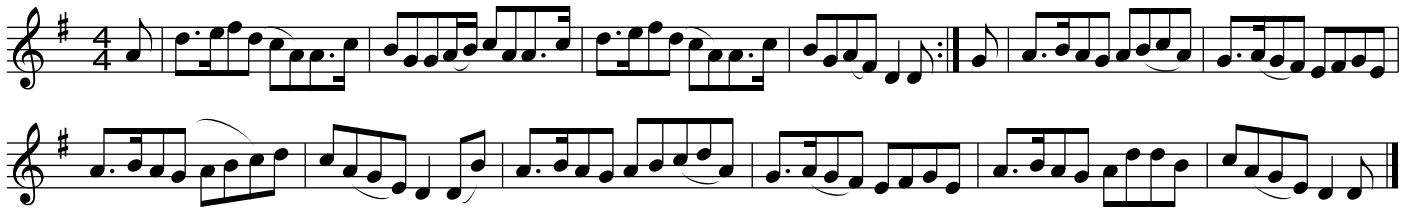
μουσική του folkloric celtic

Τρανσκριπτική παρ  
ananne@carimail.com  
<http://ananne.gr>

Version : juillet 2002

---

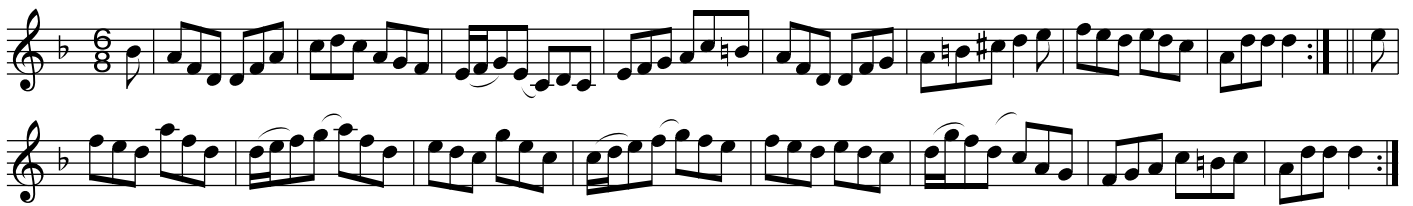
ALL the way to Galway  
An bochara ar fad go Gaillimh



The púrhoman  
bean gaeothlach



Δ τμήρ το Galway  
Tuair go Gaillimh



Ολο ματρή of Galway (original)  
Seardanaís Gaillim



Θη μαρο ι νε 'επ φορζοτ  
An caim do cummighim i zcomhurohe

Musical score for 'The maro i ne' ep forzos'. It consists of three staves of music in G major and 6/8 time. The melody is written on the top staff, and the accompaniment is on the middle and bottom staves. There are triplets in the middle and bottom staves.

στατια Donelly 'r

Musical score for 'στατια Donelly' r. It consists of two staves of music in G major and 6/8 time. The melody is written on the top staff, and the accompaniment is on the bottom staff. There is a first ending bracket in the bottom staff.

Αβερσαμνευ hoire

mel ζου

Musical score for 'Αβερσαμνευ hoire'. It consists of three staves of music in G major and 6/8 time. The melody is written on the top staff, and the accompaniment is on the middle and bottom staves.

Αλεξαντερι Cunningham

Musical score for 'Αλεξαντερι Cunningham'. It consists of three staves of music in G major and 6/8 time. The melody is written on the top staff, and the accompaniment is on the middle and bottom staves. There are accents over the notes in the melody.

The Earl of Hamilton

Triad.

Musical notation for 'The Earl of Hamilton' in C major, 2/4 time. It consists of two staves. The melody is written on the top staff, and the accompaniment is on the bottom staff. The piece ends with a double bar line.

Earl of Elgin

Nachamel Gow

Musical notation for 'Earl of Elgin' in D major, 2/4 time. It consists of four staves. The melody is written on the top staff, and the accompaniment is on the bottom three staves. The piece ends with a double bar line.

Lady Carmichael of Carle Craig

John Gow

Musical notation for 'Lady Carmichael of Carle Craig' in C major, 2/4 time. It consists of two staves. The melody is written on the top staff, and the accompaniment is on the bottom staff. The piece ends with a double bar line.

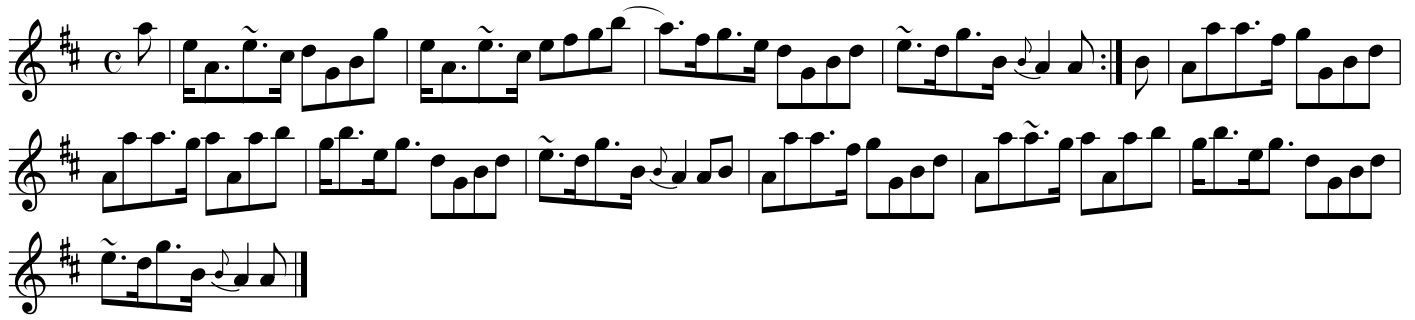
Yerter Houre

Mel Gow

Musical notation for 'Yerter Houre' in D major, 2/4 time. It consists of three staves. The melody is written on the top staff, and the accompaniment is on the bottom two staves. The piece ends with a double bar line.

yerter houpe (2)

mel zou



merriily d'anced the quaker' r wife

mel zou



Willie Taylor  
The und'anted female.



Willie Taylor and hir youthful lover, full of mirth and loyalty,  
They were going to the church to be married, he was pierced and rent to red,

Dally dilly dum dilly dum dum dum,  
Dally dilly dum dilly dum dum dey.

She pierced herself up like a railor, on her breast she wore a star,  
Her beautiful fingers long and slender, she gave them all just a riddle of star.

On thir ship there being a quarrel, she being one amongst the rest,  
A silver button flew off her jacket, there appeared her now white breast.

Said the captain to his fair maid, what misfortune has took you here,  
I'm in reach of my true lover, whom you pierced on the other year.

If you're in reach of your true lover, pray come tell to me his name,  
Willie Taylor they so call him but remember it his name.

Let you get up tomorrow morning, early at the break of day,  
There you'll find your Willie Taylor, walking along with his lady gay.

She got up the very next morning, early at the break of day,  
There she spied her Willie Taylor walking along with his lady gay.

She drew about a brace of pistols that she had at her command,  
There she shot her Willie Taylor with his bow at his right hand.

When the captain came to hear it, of the deed that she had done,  
He made her ship's commandeer, over a vessel for the Isle of Man.