

# ORCHESOGRAFIE (1589)

par Jehan Tabourot (1519–1595)

aussi surnommé Thoinot Arbeau

(extraits)

---

Transcriptions par  
Eric Forgeot  
<http://anamnese.fr.st>  
Version : septembre 2008



## Tabulature du Fifre, ou Arigot du troisieme ton. (\*)

France



## Tabulature pour iouer du Fifre ou Arigot en mesure ternaire. (\*)

France



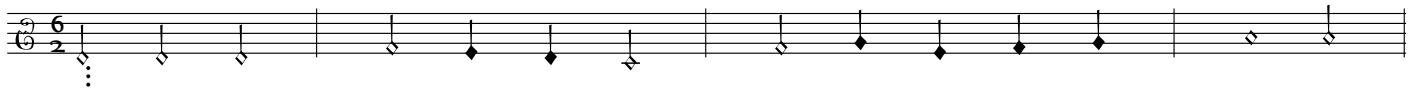
# Basse-dance appelle : louyssance vous donneray :

avec les mesures & battemens du tabourin.

Trad. (France)

Air de la basse dance

♩ = 160



continuation de l'air



branle



Devx simples



Dovble



Reprise



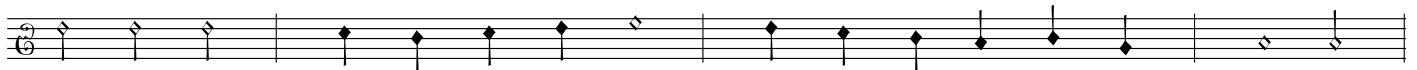
Dovble



Reprise



Branle



Devx simples



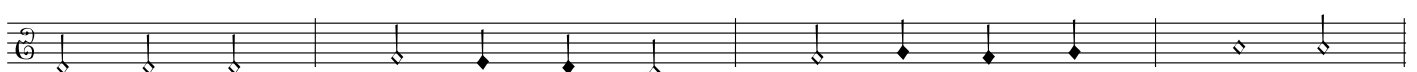
Dovble



Dovble



Dovble



Reprise



Dovble



Reprise



Branle



Devx simples



Dovble



Reprise



Branle & congé

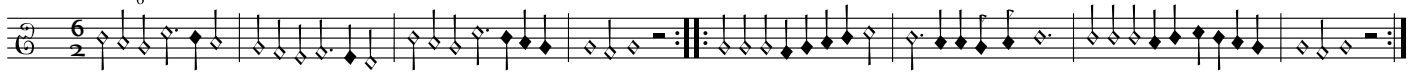
### Retour de la basse-dance avec les battement du tabourin. (\*)

Trad. (France)

### Tourdion

Trad. (France)

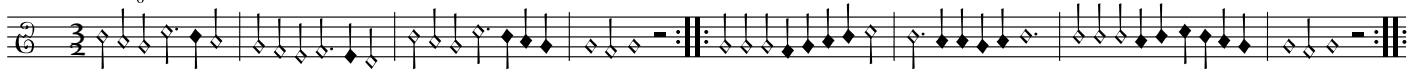
♩ = 60



### Tourdion0

Trad. (France)

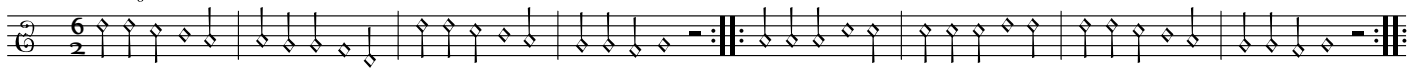
♩ = 200



### Air de la gaillarde appellee, La traditore my fa morire

Trad. (France)

♩ = 75



### Air de la gaillarde appellee Anthoinette

Trad. (France)

♩ = 130



### Air de la gaillarde appellee Anthoinette

Trad. (France)

♩ = 30



Air de la gaillarde appallee Baisons nous belle

Trad. (France)

♩ = 70

Musical notation for the piece 'Air de la gaillarde appallee Baisons nous belle'. It is written on a single staff in 6/2 time. The tempo is marked as ♩ = 70. The piece consists of 16 measures, ending with a double bar line and repeat dots.

Air de la gaillarde appallee Si i'ayme ou non.

Trad. (France)

♩ = 50

Musical notation for the piece 'Air de la gaillarde appallee Si i'ayme ou non.'. It is written on a single staff in 6/2 time. The tempo is marked as ♩ = 50. The piece consists of 16 measures, ending with a double bar line and repeat dots.

Air de gaillarde.

Trad. (France)

♩ = 150

Musical notation for the piece 'Air de gaillarde.'. It is written on a single staff in 6/2 time. The tempo is marked as ♩ = 150. The piece consists of 16 measures, ending with a double bar line and repeat dots.

Air de la gaillarde appallee La fatigue.

Trad. (France)

♩ = 50

Musical notation for the piece 'Air de la gaillarde appallee La fatigue.'. It is written on a single staff in 6/2 time. The tempo is marked as ♩ = 50. The piece consists of 16 measures, ending with a double bar line and repeat dots.

Air de la gaillarde appallee La Milannoise.

Trad. (France)

♩ = 170

Musical notation for the piece 'Air de la gaillarde appallee La Milannoise.'. It is written on a single staff in 6/2 time. The tempo is marked as ♩ = 170. The piece consists of 16 measures, ending with a double bar line and repeat dots.

Air de la gaillarde appallee l'aymerois mieulx dormir seulette.

Trad. (France)

♩ = 50

Musical notation for the piece 'Air de la gaillarde appallee l'aymerois mieulx dormir seulette.'. It is written on a single staff in 6/2 time. The tempo is marked as ♩ = 50. The piece consists of 16 measures, ending with a double bar line and repeat dots.

Air de la gaillarde appallee L'ennuy qui me tourmente.

Trad. (France)

♩ = 150

Musical notation for the piece 'Air de la gaillarde appallee L'ennuy qui me tourmente.'. It is written on two staves in 6/2 time. The tempo is marked as ♩ = 150. The piece consists of 16 measures, ending with a double bar line and repeat dots.

Air d'une volte

Trad. (France)

♩ = 180

Musical notation for the piece 'Air d'une volte'. It is written on a single staff in 6/2 time. The tempo is marked as ♩ = 180. The piece consists of 16 measures, ending with a double bar line and repeat dots.

Air de la Courante

Trad. (France)

♩ = 150

Musical notation for the piece 'Air de la Courante'. It is written on a single staff in 6/2 time. The tempo is marked as ♩ = 150. The piece consists of 16 measures, ending with a double bar line and repeat dots.

Air de l'Allemande, pour la première et seconde partie.

Trad. (France)

♩ = 150



Tabulature de la troisième partie de l'Allemande

Trad. (France)

♩ = 150



Air d'un branle double.

Trad. (France)

♩ = 175



Air d'un branle simple.

Trad. (France)

♩ = 175



Air du branle gay.

Trad. (France)

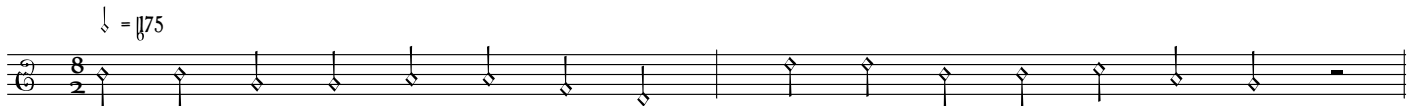
♩ = 180



Air du branle de Bourgoigne.

Trad. (France)

♩ = 175



Air d'un branle haut Barrois.

Trad. (France)

♩ = 150



Air du branle coupé nommé Cassandre.

Trad. (France)

♩ = 195



Air du branle coupé nommé Pinagay.

Trad. (France)

♩ = 180



### Air du branle coupé appelé Charlotte.

Trad. (France)

♩ = 200



### Air du branle coupé de la guerre

Trad. (France)

♩ = 150



### Air du branle coupé appelé Aridan.

Trad. (France)

♩ = 150



### Air du branle de Poitou

Trad. (France)

♩ = 170



### Air du premier branle d'Écosse.

Trad. (France)

♩ = 215



### Air du second branle d'Écosse.

Trad. (France)

♩ = 215



### Triory de Bretagne.

Trad. (France)

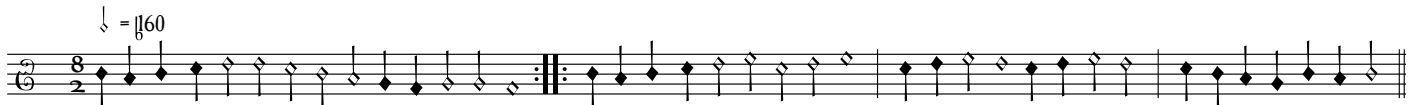
♩ = 170



### Branle de Malte.

Trad. (France)

♩ = 160



### Bransle des lavandières

France

♩ = 200



## Branle des pois

Trad. (France)

♩ = 200

♩ = 150

## Branle des hermites

France

♩ = 200

## Branle de la torche

Branle du chandelier

Trad. (France)

♩ = 220

## Branle des sabots

Trad. (France)

♩ = 220

## Branle des chevaux (original)

Trad. (France)

♩ = 220

## Branle des chevaux (adapté)

Trad. (France)

♩ = 220

## Branle de la Montarde

Trad. (France)

♩ = 220

## Branle de la Haye

Trad. (France)


♩ = 220

1

## Branle de l'Official

Trad. (France)

♩ = 220



Musical notation for Branle de l'Official, featuring a treble clef, 8/2 time signature, and a key signature of one flat. The piece consists of two measures of music, each ending with a double bar line and repeat dots.

## Air de la Gauotte

Trad. (France)

♩ = 220



Musical notation for Air de la Gauotte, featuring a treble clef, 8/2 time signature, and a key signature of one flat. The piece consists of two measures of music, each ending with a double bar line and repeat dots.

## Air de Morisques

Trad. (France)

♩ = 220




Musical notation for Air de Morisques, featuring a treble clef, 8/2 time signature, and a key signature of one flat. The piece consists of two measures of music, each ending with a double bar line and repeat dots.

## Air des Canaries

Trad. (France)

♩ = 220



Musical notation for Air des Canaries, featuring a treble clef, 8/2 time signature, and a key signature of one flat. The piece consists of two measures of music, each ending with a double bar line and repeat dots.

## Air & mouvements de la pauane d'Espagne

Trad. (France)

♩ = 220



Musical notation for Air & mouvements de la pauane d'Espagne, featuring a treble clef, 8/2 time signature, and a key signature of one flat. The piece consists of two measures of music, each ending with a double bar line and repeat dots.

## Air des Bouffons

Trad. (France)

♩ = 220



Musical notation for Air des Bouffons, featuring a treble clef, 8/2 time signature, and a key signature of one flat. The piece consists of two measures of music, each ending with a double bar line and repeat dots.